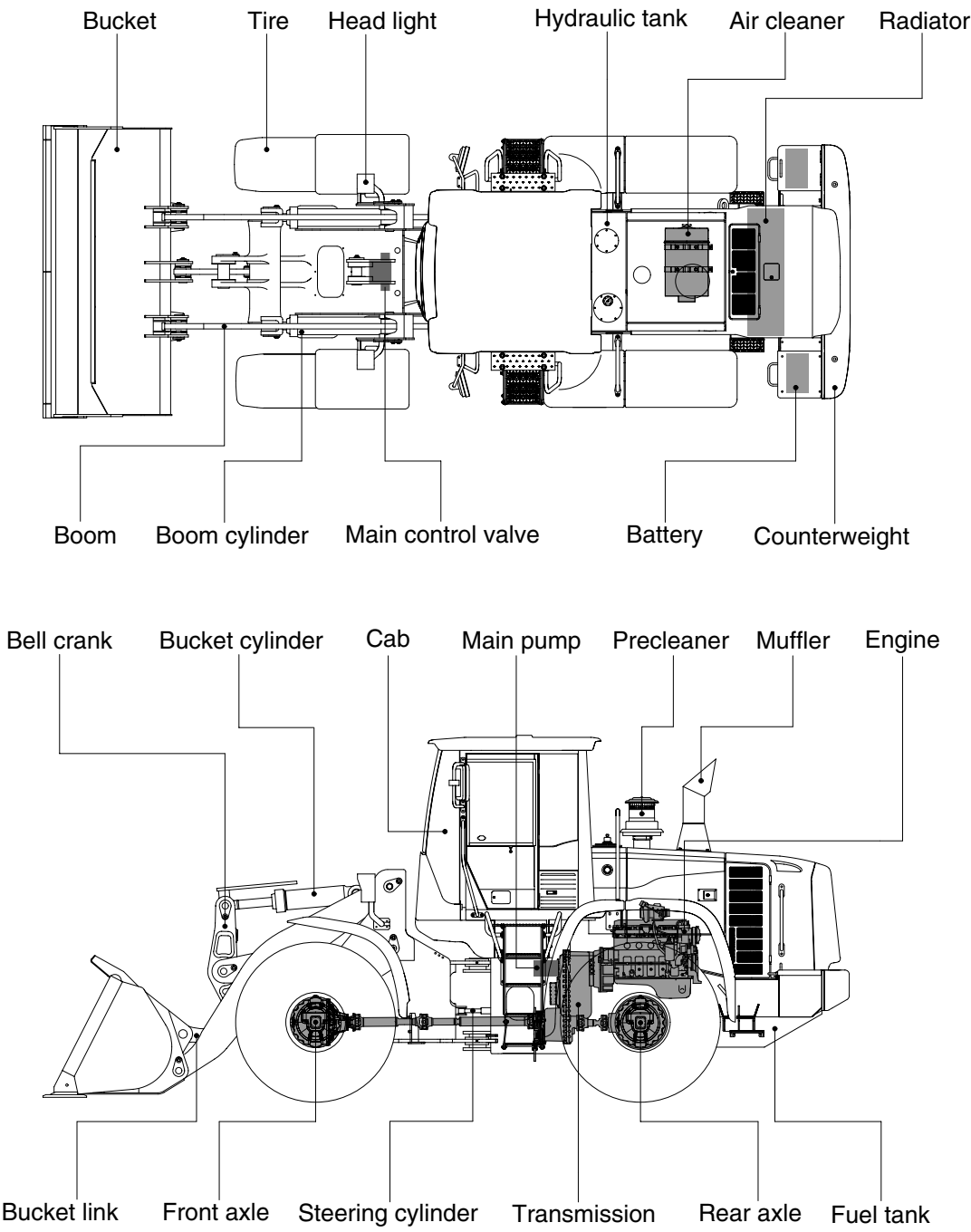


# 2. SPECIFICATIONS

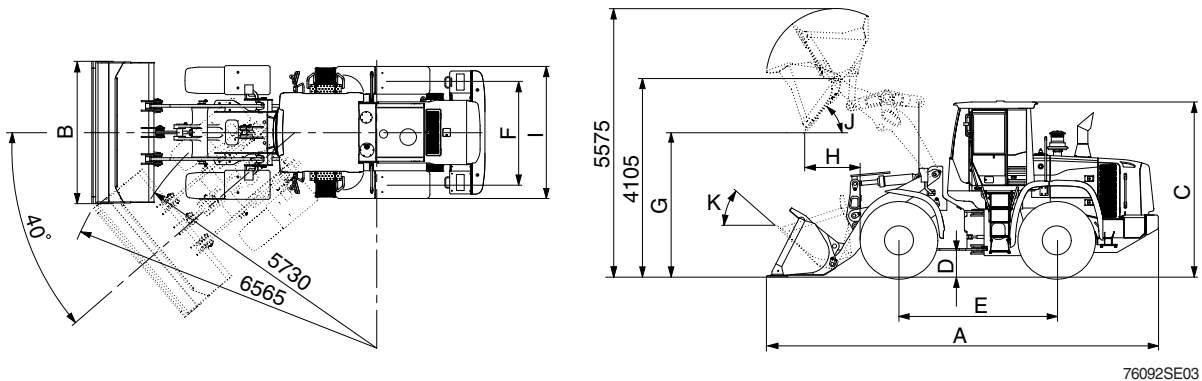
## 1. MAJOR COMPONENTS



75792SE01

## 2. SPECIFICATIONS

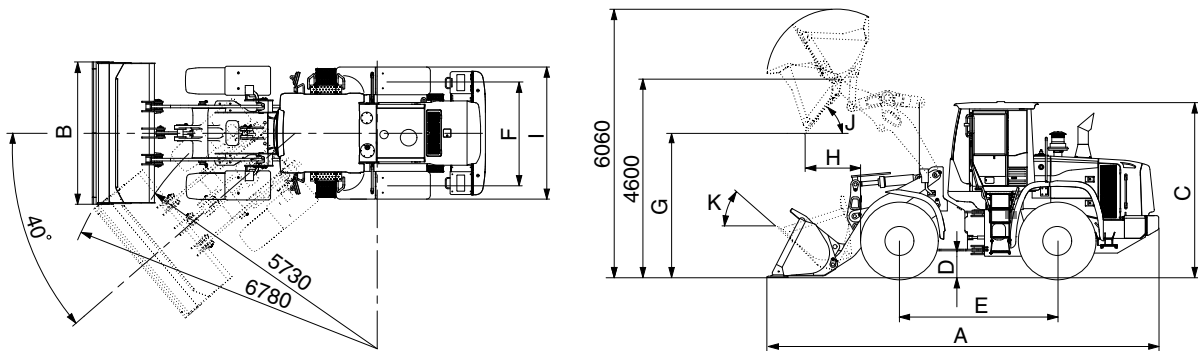
### 1) WITH BOLT-ON CUTTING EDGE TYPE BUCKET (HL760-9)



76092SE03

Description			Unit	Specification
Operating weight			kg (lb)	17900 (39460)
Bucket capacity	Struck		m³ (yd³)	2.8 (3.7)
	Heaped			3.3 (4.3)
Overall length	A		mm (ft-in)	8100 (26' 7")
Overall width	B			2900 (9' 6")
Overall height	C			3450 (11' 4")
Ground clearance	D			420 (1' 5")
Wheelbase	E			3300 (10' 10")
Tread	F			2160 (7' 1")
Dump clearance at 45°	G			2970 (9' 9")
Dump reach (full lift)	H			1220 (4' 0")
Width over tires	I			2770 (9' 1")
Dump angle	J			degree (°)
Roll back angle (carry position)	K		47	
Cycle time	Lift (with load)		sec	5.8
	Dump (with load)			1.2
	Lower (empty)			3.1
Maximum travel speed			km/hr (mph)	38.1 (23.7)
Braking distance			m (ft-in)	13 (42' 7")
Minimum turning radius (center of outside tire)				5.73 (18' 9")
Gradeability			degree (°)	30
Travel speed	Forward	First gear	km/hr (mph)	6.3 (3.9)
		Second gear		12.0 (7.5)
		Third gear		24.0 (15.0)
		Fourth gear		38.1 (23.7)
	Reverse	First gear		6.7 (4.2)
		Second gear		12.6 (7.9)
		Third gear		25.2 (15.7)

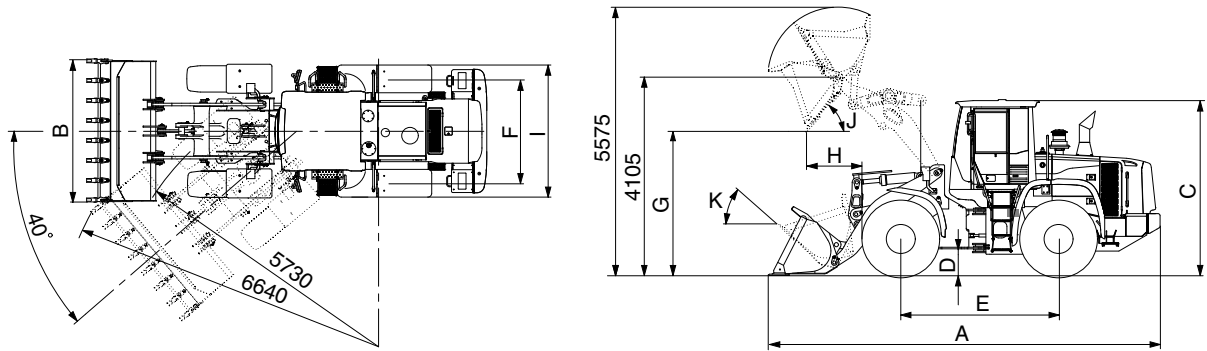
## WITH BOLT-ON CUTTING EDGE TYPE BUCKET (HL760XTD-9)



76092SE03-1

Description			Unit	Specification
Operating weight			kg (lb)	18700 (41230)
Bucket capacity	Struck		m³ (yd³)	2.8 (3.7)
	Heaped			3.3 (4.3)
Overall length	A		mm (ft-in)	8660 (28' 5")
Overall width	B			2900 (9' 6")
Overall height	C			3450 (11' 4")
Ground clearance	D			420 (1' 5")
Wheelbase	E			3300 (10' 10")
Tread	F			2160 (7' 1")
Dump clearance at 45°	G			3460 (11' 4")
Dump reach (full lift)	H			1235 (4' 1")
Width over tires	I			2770 (9' 1")
Dump angle	J		degree (°)	47
Roll back angle (carry position)	K			49
Cycle time	Lift (with load)		sec	5.8
	Dump (with load)			1.2
	Lower (empty)			3.1
Maximum travel speed			km/hr (mph)	38.1 (23.7)
Braking distance			m (ft-in)	13 (42' 7")
Minimum turning radius (center of outside tire)				5.73 (18' 9")
Gradeability			degree (°)	30
Travel speed	Forward	First gear	km/hr (mph)	6.3 (3.9)
		Second gear		12.0 (7.5)
		Third gear		24.0 (15.0)
		Fourth gear		38.1 (23.7)
	Reverse	First gear		6.7 (4.2)
		Second gear		12.6 (7.9)
		Third gear		25.2 (15.7)

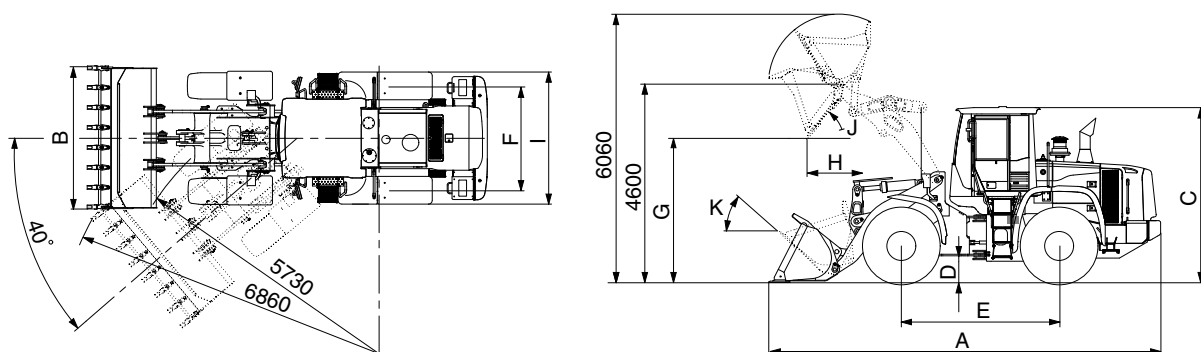
## 2) WITH TOOTH TYPE BUCKET (HL760-9)



76092SE02

Description			Unit	Specification
Operating weight			kg (lb)	17900 (39460)
Bucket capacity	Struck		m³ (yd³)	2.7 (3.5)
	Heaped			3.2 (4.2)
Overall length	A		mm (ft-in)	8255 (27' 1")
Overall width	B			2950 (9' 8")
Overall height	C			3450 (11' 4")
Ground clearance	D			420 (1' 5")
Wheelbase	E			3300 (10' 10")
Tread	F			2160 (7' 1")
Dump clearance at 45°	G			2845 (9' 4")
Dump reach (full lift)	H			1305 (4' 3")
Width over tires	I			2770 (9' 1")
Dump angle	J		degree (°)	47
Roll back angle (carry position)	K			47
Cycle time	Lift (with load)		sec	5.8
	Dump (with load)			1.2
	Lower (empty)			3.1
Maximum travel speed			km/hr (mph)	38.1 (23.7)
Braking distance			m (ft-in)	13 (42' 7")
Minimum turning radius (center of outside tire)				5.73 (18' 9")
Gradeability			degree (°)	30
Travel speed	Forward	First gear	km/hr (mph)	6.3 (3.9)
		Second gear		12.0 (7.5)
		Third gear		24.0 (15.0)
		Fourth gear		38.1 (23.7)
	Reverse	First gear		6.7 (4.2)
		Second gear		12.6 (7.9)
		Third gear		25.2 (15.7)

## WITH TOOTH TYPE BUCKET (HL760XTD-9)



76092SE02-1

Description			Unit	Specification
Operating weight			kg (lb)	18700 (41320)
Bucket capacity	Struck		m³ (yd³)	2.7 (3.5)
	Heaped			3.2 (4.2)
Overall length	A		mm (ft-in)	8820 (28' 11")
Overall width	B			2950 (9' 8")
Overall height	C			3450 (11' 4")
Ground clearance	D			420 (1' 5")
Wheelbase	E			3300 (10' 10")
Tread	F			2160 (7' 1")
Dump clearance at 45°	G			3335 (10' 11")
Dump reach (full lift)	H			1330 (4' 4")
Width over tires	I			2770 (9' 1")
Dump angle	J			degree (°)
Roll back angle (carry position)	K		49	
Cycle time	Lift (with load)		sec	5.8
	Dump (with load)			1.2
	Lower (empty)			3.1
Maximum travel speed			km/hr (mph)	38.1 (23.7)
Braking distance			m (ft-in)	13 (42' 7")
Minimum turning radius (center of outside tire)				5.73 (18' 9")
Gradeability			degree (°)	30
Travel speed	Forward	First gear	km/hr (mph)	6.3 (3.9)
		Second gear		12.0 (7.5)
		Third gear		24.0 (15.0)
		Fourth gear		38.1 (23.7)
	Reverse	First gear		6.7 (4.2)
		Second gear		12.6 (7.9)
		Third gear		25.2 (15.7)

### 3. WEIGHT

Item		kg	lb
Front frame assembly		1652	3640
Rear frame assembly		1998	4410
Front fender (LH & RH)		31	68
Counterweight	HL760-9	1050	2320
	HL760XTD-9	1650	3640
Cab assembly		1050	2320
Engine assembly		485	1070
Transmission assembly		470	1040
Drive shaft (front)		44	97
Drive shaft (center)		46	101
Drive shaft (rear)		27	60
Front axle (include differential)		630	1330
Rear axle (include differential)		632	1390
Tire (23.5-25, 20PR. L3)		300	661
Hydraulic tank assembly		250	550
Fuel tank assembly		362	798
Main pump assembly		55	121
Fan & brake pump assembly		7	15
Main control valve (2/3 spool)		34/41	75/90
Steering valve (EHPS)		15	33
Boom assembly	HL760-9	1200	2646
	HL760XTD-9	1360	3000
Bell crank assembly		360	794
Bucket link		57	126
3.3 m <sup>3</sup> bucket, with bolt on cutting edge		1670	3680
3.2 m <sup>3</sup> bucket, with tooth		1660	3660
Boom cylinder assembly		150	331
Bucket cylinder assembly		172	379
Steering cylinder assembly		25	55
Seat		40	88
Battery		55	121

## 4. SPECIFICATION FOR MAJOR COMPONENTS

### 1) ENGINE

Item	Specification
Model	Cummins QSB6.7 / HYUNDAI HE6.7
Type	4-cycle turbocharged, charge air cooled diesel engine
Control type	Electronic control
Cooling method	Water cooling
Number of cylinders and arrangement	6 cylinders, in-line
Firing order	1-5-3-6-2-4
Combustion chamber type	Direct injection type
Cylinder bore × stroke	107 × 124 mm (4.2" × 4.9")
Piston displacement	6730 cc (410cu in)
Compression ratio	17.2 : 1
Rated horse power (Gross)	215 hp at 2100 rpm
Maximum torque at 1500 rpm	97 kgf · m (702 lbf · ft)
Engine oil quantity	18 l (4.8 U.S. gal)
Wet weight	485 kg (1062 lb)
High idling speed	2230 ± 50 rpm
Low idling speed	800 ± 25 rpm
Rated fuel consumption (at rated)	234 g/kW · hr
Starting motor	Nippondenso 228000-7902 (24V-3.7kW)
Alternator	Delco Remy 24SI (24V-70Amp)
Battery	2 × 12V × 130Ah

## 2) MAIN PUMP

Item	Specification	
	Steering	Loader
Type	Variable piston pump	
Capacity	60 cc/rev	51 cc/rev
Maximum operating pressure	280 kgf/cm <sup>2</sup> (3980 psi)	
Rated oil quantity	126 l /min (33.3 U.S.gpm)	107 l /min (28.3 U.S.gpm)
Rated speed	2100 rpm	

## 3) FAN + BRAKE PUMP

Item	Specification	
	Fan	Brake
Type	Fixed displacement tandem gear pump	
Capacity	19.0 cc/rev	11.9 cc/rev
Maximum operating pressure	120 kgf/cm <sup>2</sup> (1710 psi)	150 kgf/cm <sup>2</sup> (2130 psi)
Rated oil quantity	43 l /min (10.8 U.S.gpm)	27 l /min (6.6 U.S.gpm)
Rated speed	2100 rpm	

## 4) MAIN CONTROL VALVE

Item	Specification
Type	2 spool
Operating method	Hydraulic pilot assist
System pressure	280 kgf/cm <sup>2</sup> (3980 psi)
Overload relief valve pressure	340 kgf/cm <sup>2</sup> (4840 psi) / *300 kgf/cm <sup>2</sup> (4270 psi)

\* : Bucket dump

## 5) REMOTE CONTROL VALVE

Item		Specification
Type		Pressure reducing type
Operating pressure	Minimum	6.5 kgf/cm <sup>2</sup> (92.4 psi)
	Maximum	22 kgf/cm <sup>2</sup> (312.9 psi)
Single operation stroke	Lever	80 mm (3.4 in)



## 6) CYLINDER

Item		Specification
Boom cylinder	Bore dia × Rod dia × Stroke	ø 140 × ø 80 × 757 mm
Bucket cylinder	Bore dia × Rod dia × Stroke	ø 160 × ø 85 × 530 mm
Steering cylinder	Bore dia × Rod dia × Stroke	ø 75 × ø 45 × 424 mm

## 7) DYNAMIC POWER TRANSMISSION DEVICES

Item			Specification
Transmission	Model		ZF4WG 210
	Type	Converter	Single-stage, single-phase
		Transmission	Full-automatic power shift
	Converter stall ratio		2.121 : 1
	Gear shift		Forward fourth gear, reverse third gear
	Control		Electrical single lever type, kick-down system
	Pump rated flow		105 ℓ /min (27.7 U.S.gpm) at 2000 rpm
Axle	Drive devices		4-wheel drive
	Front		Front fixed location
	Rear		Oscillation ± 12° of center pin-loaded
Wheels	Tires		23.5-25, 20PR (L3)
Brakes	Travel		Four-wheel, wet-disc type, full hydraulic
	Parking		Spring applied, hydraulic released brake on transmission
Steering	Type		Full hydraulic, articulated
	Steering angle		40° to both right and left angle, respectively